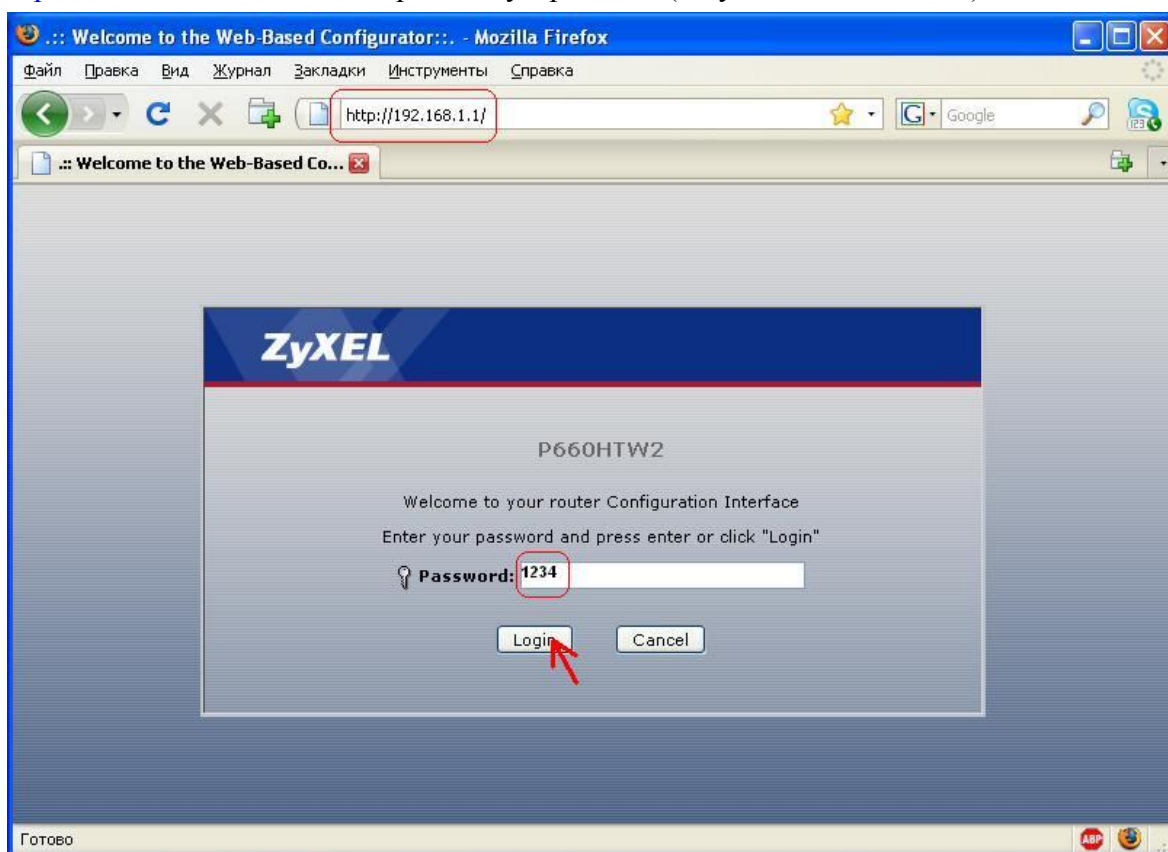
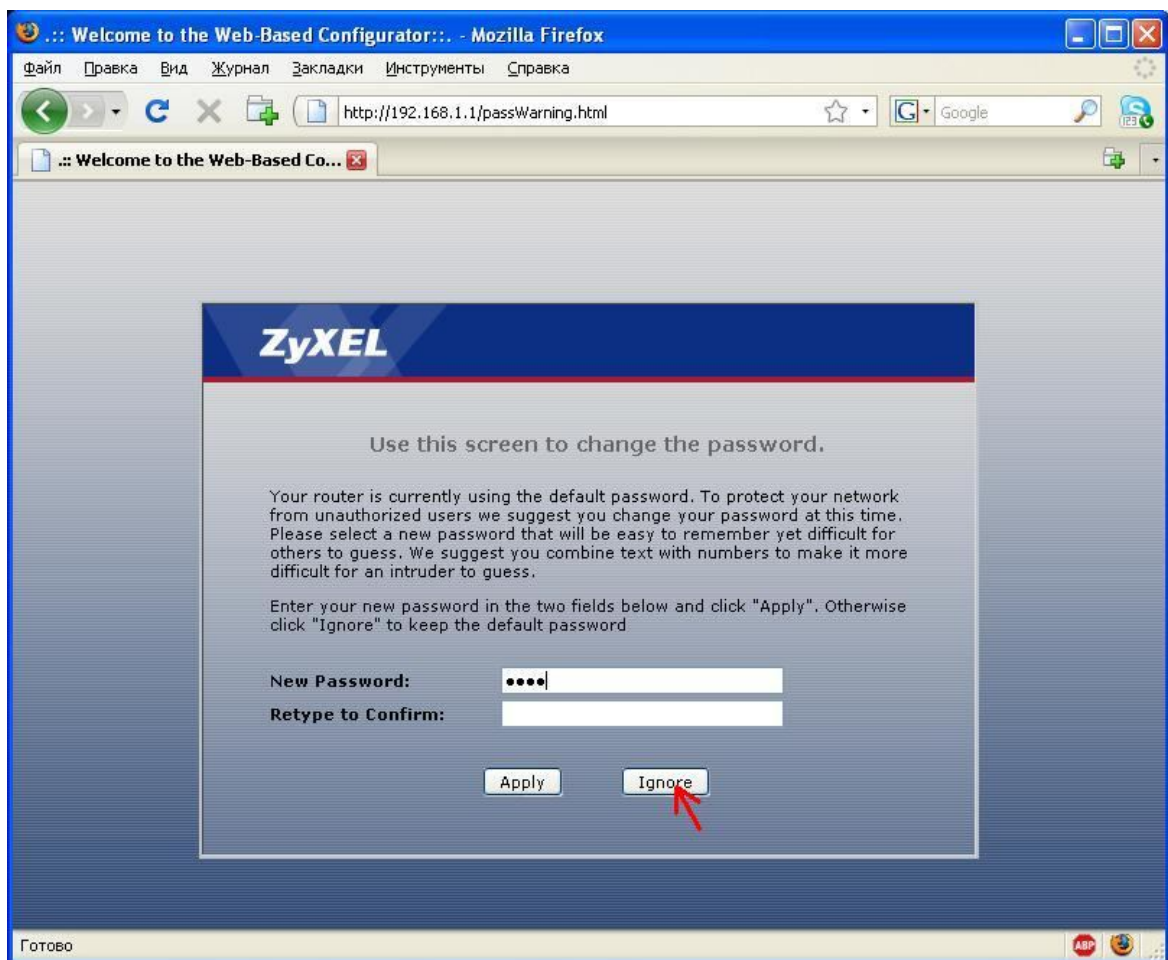


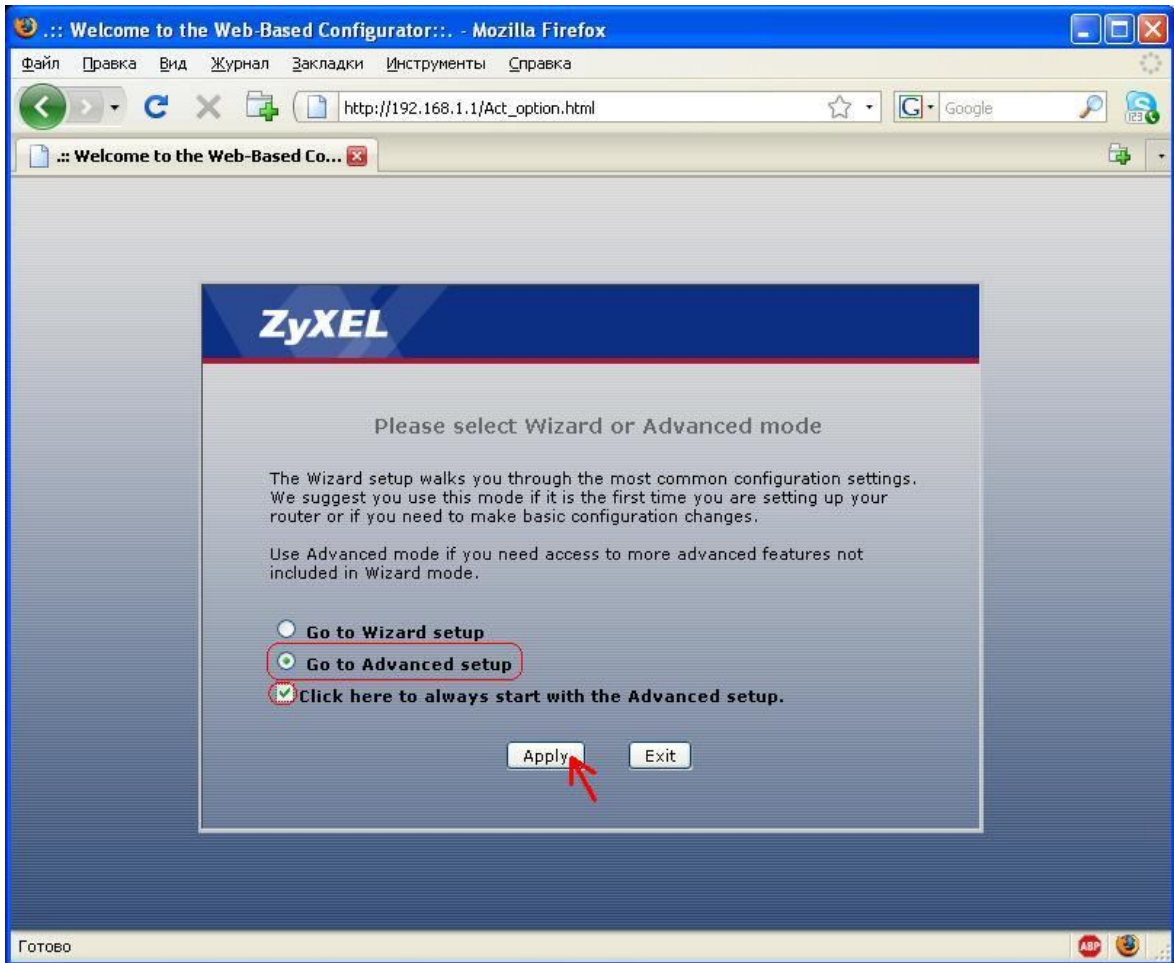
1. Подключите модем к компьютеру.
2. Запустите интернет-обозреватель. Откройте страницу настроек модема по адресу <http://192.168.1.1>. Введите пароль на устройство (по умолчанию – 1234)



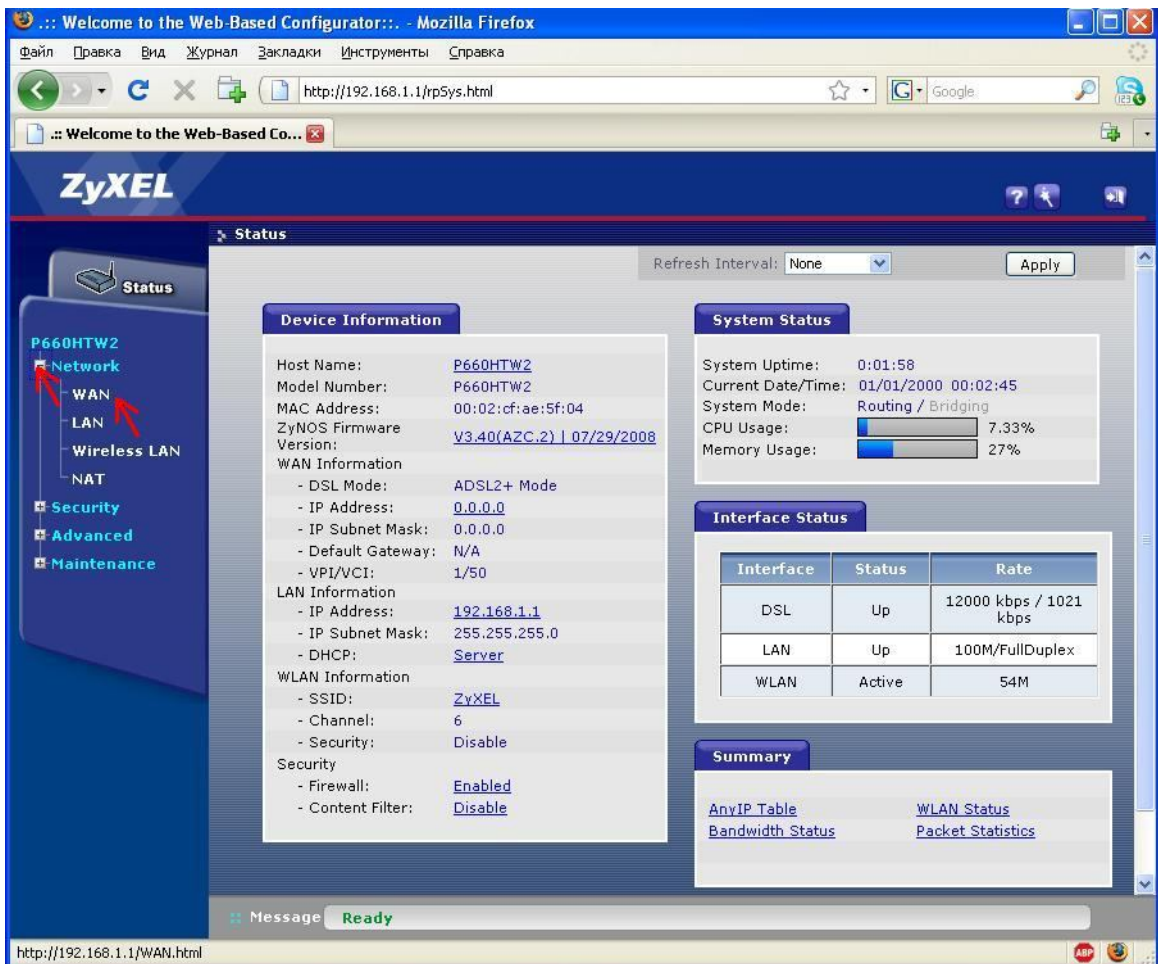
3. Поменяйте пароль по умолчанию (рекомендуем) или нажмите Ignore для пропуска этой процедуры.



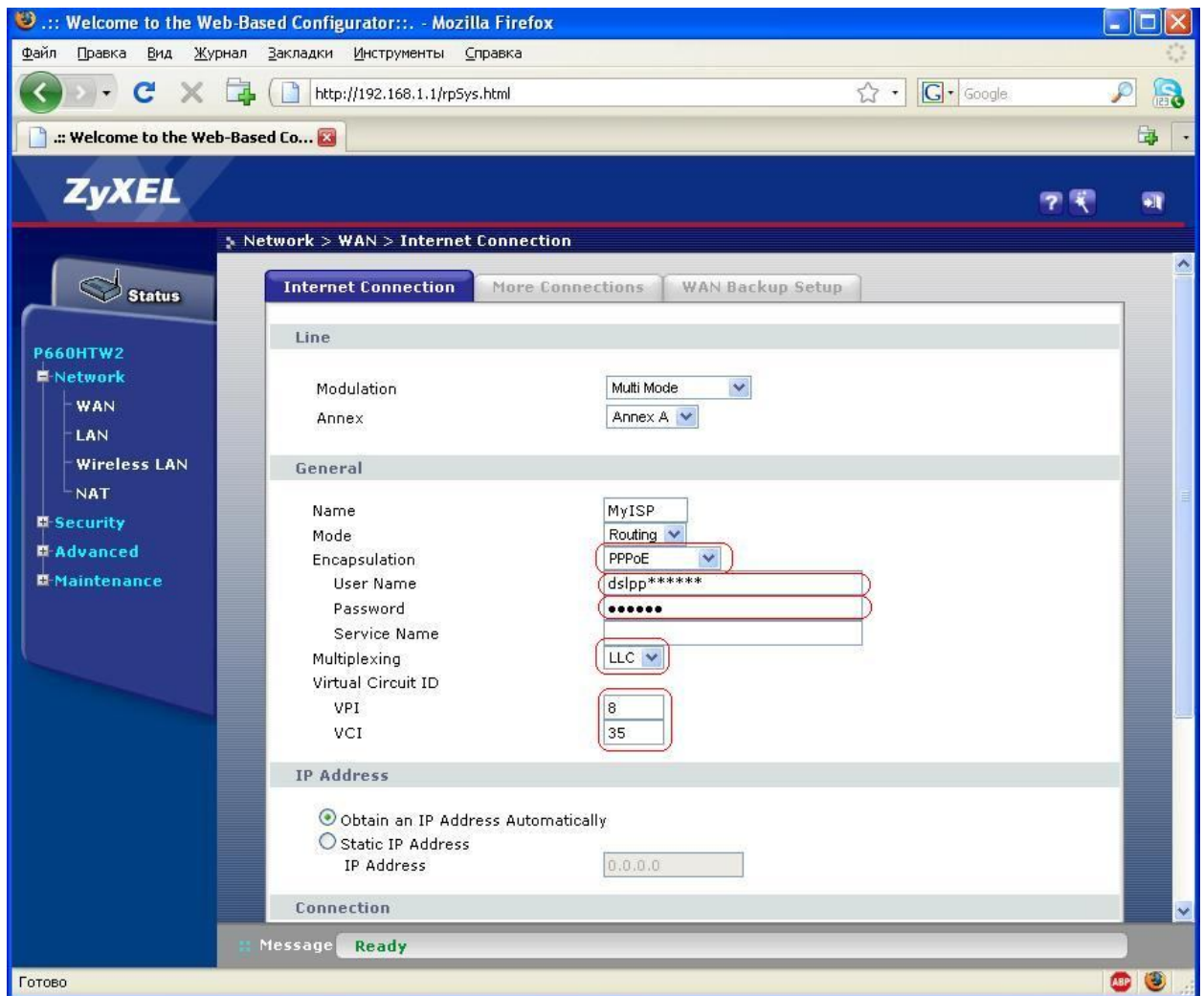
4. Перейдите в расширенный режим настроек (Go to Advanced setup).



5. Перейдите на страницу WAN во вкладке Network









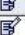









6. Выберите тип драйвера PPPoE, введите учетные данные – пользователь и пароль (login и pw с договорной карты xDSL), тип фрейма LLC, впишите настройки PVC – VPI -8, VCI – 35.



7. Для настройки IP-TV выберите пункт More Connection, Edit

The screenshot shows the ZyXEL web-based configurator interface in a Mozilla Firefox browser. The browser address bar shows the URL `http://192.168.1.1/rpSys.html`. The page title is "Welcome to the Web-Based Configurator". The ZyXEL logo is visible at the top left. The main navigation menu on the left includes "Status", "Network", "Security", "Advanced", and "Maintenance". The "Network" menu is expanded, showing "WAN", "LAN", "Wireless LAN", and "NAT". The "More Connections" tab is selected, and a table of connections is displayed. The table has columns for "#", "Active", "Name:", "VPI/VCI", "Encapsulation", and "Modify". The first row shows "Internet Connection" with VPI/VCI "8/35" and Encapsulation "PPPoE". Red arrows point to the "More Connections" tab and the "Modify" icon in the first row. Below the table are "Apply" and "Cancel" buttons. A message bar at the bottom indicates "Message Ready".

#	Active	Name:	VPI/VCI	Encapsulation	Modify
1		Internet Connection	8/35	PPPoE	 
2	-	--	--	--	 
3	-	--	--	--	 
4	-	--	--	--	 
5	-	--	--	--	 
6	-	--	--	--	 
7	-	--	--	--	 
8	-	--	--	--	 

8. Выберите тип драйвера Bridge, инкапсуляция RFC 1483, тип фрейма LLC, впишите настройки PVC – VPI -9, VCI – 99. Нажмите Apply.

